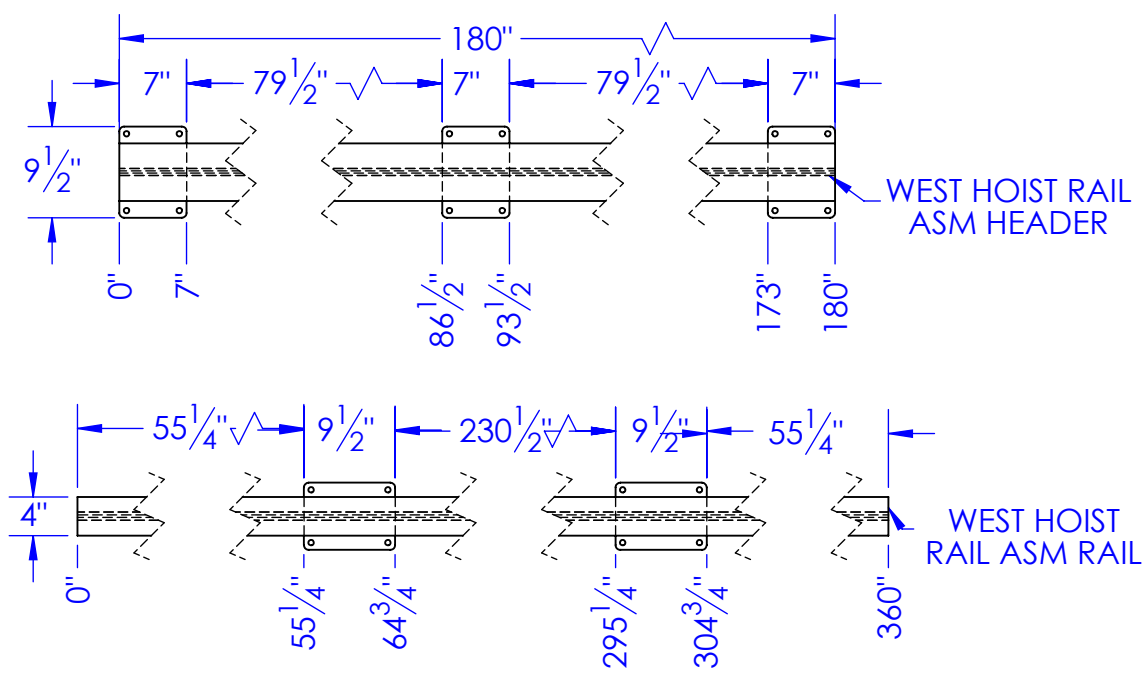
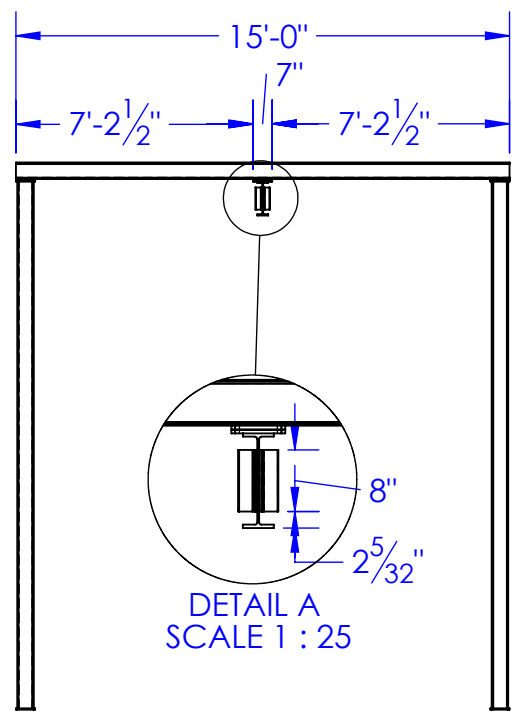
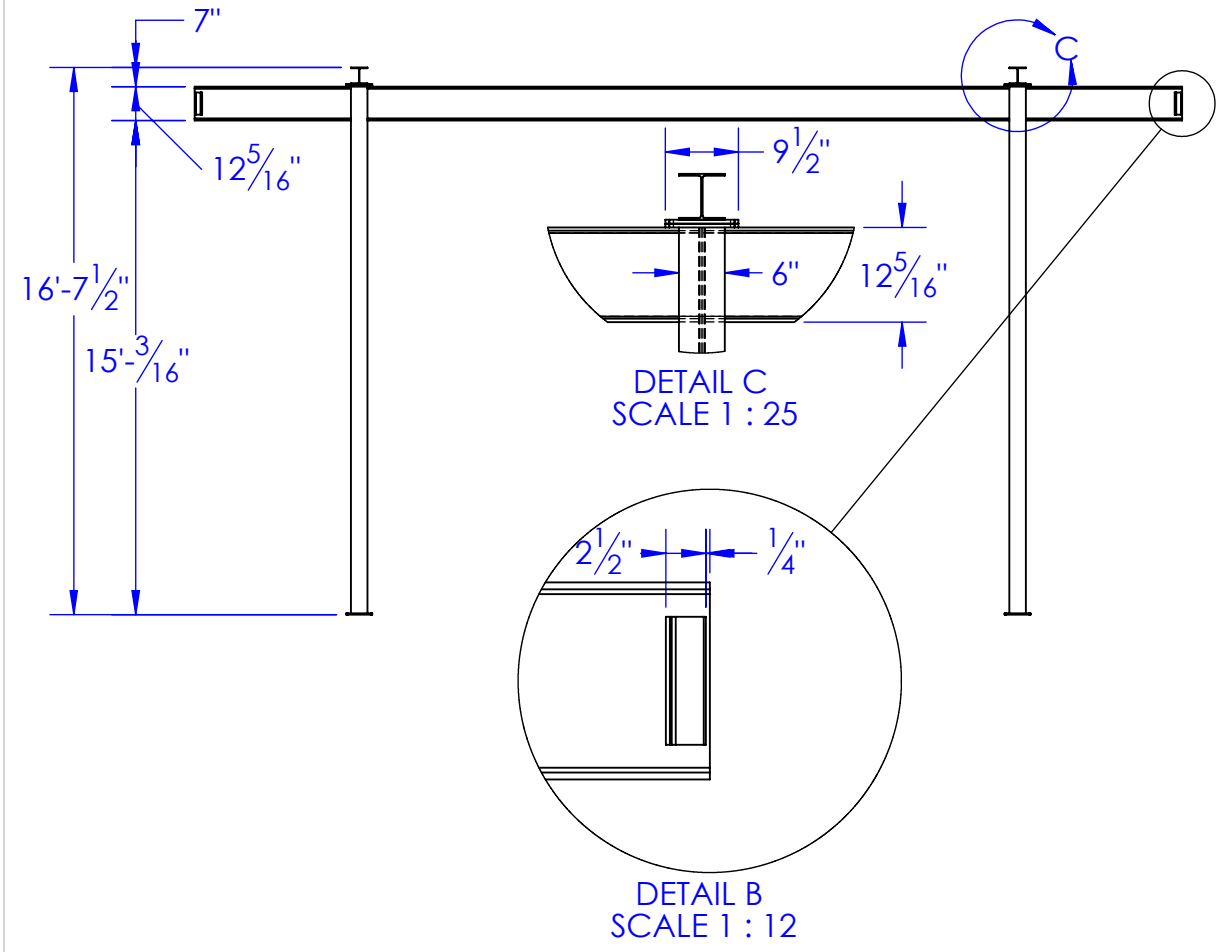
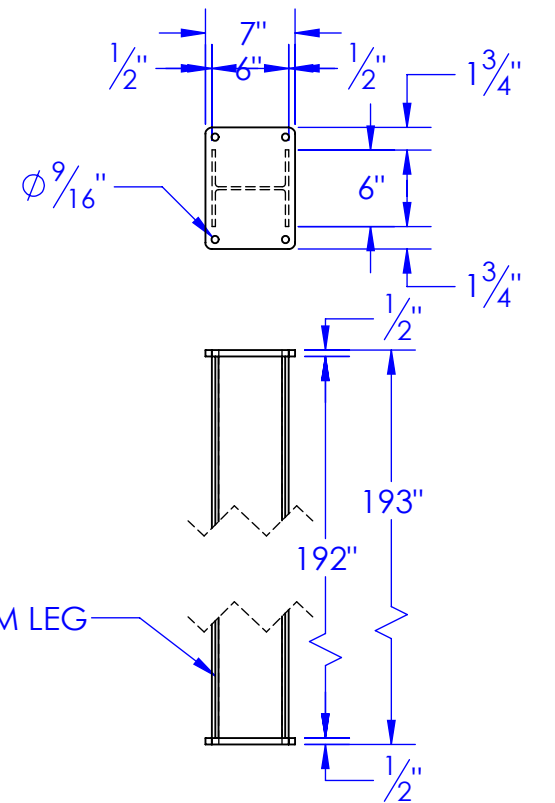
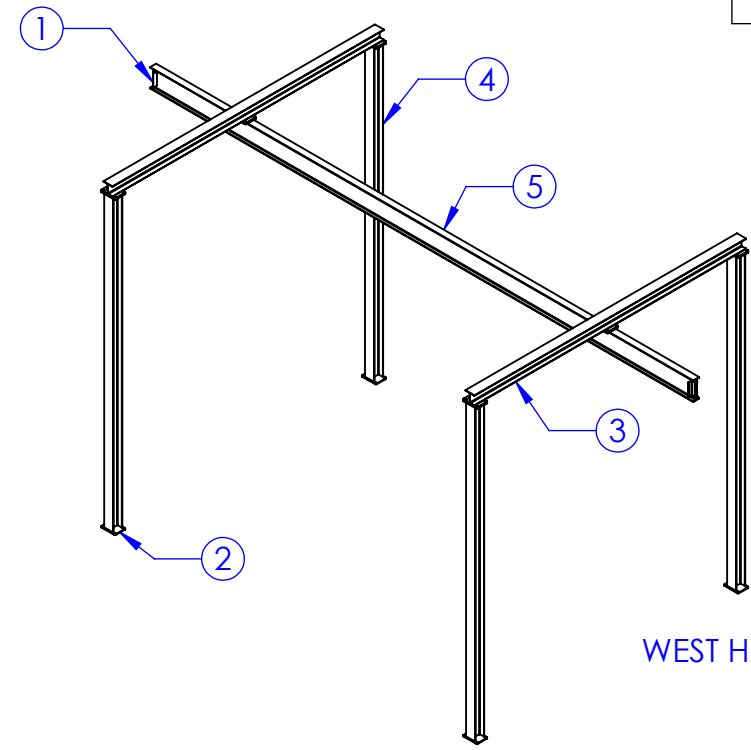
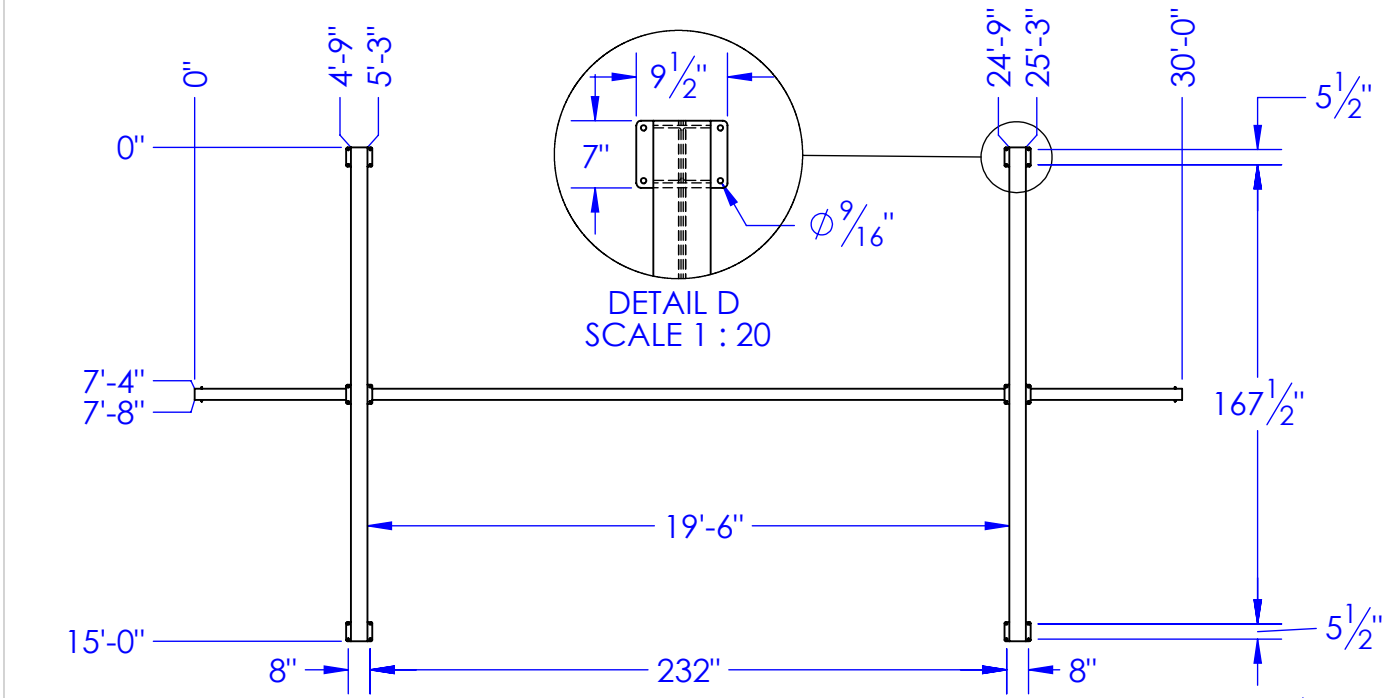


ITEM NO.	PART NUMBER	DESCRIPTION	MATERIAL	QTY.
1	FP-HOIST BEAM ANGLE	HOIST BEAM STOPS	ST-AI 2-1/2x2-1/2x3/8	4
2	FP-SPLICE PLATE	SPLICE & FLOOR ANCHOR PLATE	1/2" HRS	16
3	ST-WIDE FLANGE 6-15LB L 15FT	LENGTH: 15 FT	WIDE FLANGE 6" 15 LB	2
4	ST-WIDE FLANGE 6-15LB L 16FT	LENGTH: 16 FT	WIDE FLANGE 6" 15 LB	4
5	ST-WIDE FLANGE 12-22LB L 30FT	LENGTH: 30 FT	WIDE FLANGE 12" 22 LB	1

REVISIONS			
REV.	DESCRIPTION	DATE	APPROVED
A	INITIAL RELEASE	3/15/2012	



PROPRIETARY AND CONFIDENTIAL
THE INFORMATION CONTAINED IN THIS DRAWING IS THE SOLE PROPERTY OF <INSERT COMPANY NAME HERE>. ANY REPRODUCTION IN PART OR AS A WHOLE WITHOUT THE WRITTEN PERMISSION OF <INSERT COMPANY NAME HERE> IS PROHIBITED.

UNLESS OTHERWISE SPECIFIED:
DIMENSIONS ARE IN INCHES
TOLERANCES:
FRACTIONAL $\pm 1/16$
ANGULAR: MACH ± 1 BEND \pm
TWO PLACE DECIMAL ± 0.10
THREE PLACE DECIMAL ± 0.05
MATERIAL
DO NOT SCALE DRAWING

DRAWN		NAME	DATE	P.O. BOX 248, SABETHA KS. 66534 (785) 284-3674 FAX (785) 284-3931	
PART #		HEATH		3/15/2012	
ASM #		WEST HOIST RAIL ASSEMBLY			
COMMENTS:		HOST RAIL CRANE ASSEMBLY			
SIZE		DWG. NO.		REV	
B		95-1100		A	
SCALE: 1:70		WEIGHT: 2241.8		SHEET 1 OF 1	